

BSC 2011 | BIO II: Biological Diversity, Spring 2011

INSTRUCTOR

Dr. Marc Lajeunesse (said LA-JE-NESS)
Department of Integrative Biology
 Email: lajeunesse@usf.edu, Office: SCA 306
 Office Hours: FRIDAY 9:30 to 11:00, or by appointment

TEXTBOOK

Brooker, Widmaier, Graham and Stiling. 2011. Biology, 2nd edition. McGraw-Hill
 With access to Connect online software.

NOTE. We will not cover everything in every chapter. **Use the lecture outlines and PowerPoint handouts as guidance for which parts of the text to study.** Material not covered in your book will be fully documented in the PowerPoint handouts.

LECTURE MATERIAL

The Blackboard system (<https://my.usf.edu/>) will contain review lists, lecture notes, PowerPoint handouts, test results, grades and important messages. **You must consult this weekly** to keep track of any changes in assignments, handouts, or exam schedules.

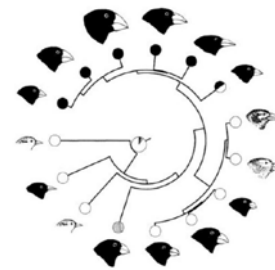
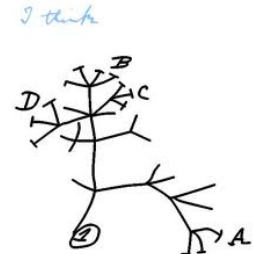
COURSE OVERVIEW. This course is designed to introduce you to the diversity of life. During your first semester of general biology (BSC 2010) you were introduced to the chemistry of life, the cell, and genetics. This semester we explore the tremendous biodiversity that results from the basic building blocks described in BSC 2010. We begin with a review of evolutionary theory and then conduct an overview of the major groups of living organisms. We end with an overview of the ecology of organisms and how individuals and populations interact with one another and their environment.

COURSE OBJECTIVES. You should have a better understanding of several major concepts by the end of the semester:

1. Mechanisms of evolution and how evolutionary relationships are inferred
2. Development of biological diversity, and relationships among major taxa
3. Basic aspects of form and function for representative members of the major taxa
4. General interactions between organisms and the environment populations grow and interact with one another

TENTATIVE LECTURE SCHEDULE (lecture times: MWF 8:30-9:20, room: CHE 111)

DATE	TOPIC
week 1 (Jan 10, 12, 14) Jan 17 th	Introduction, Origin and history of life No class, Martin Luther King, Jr. Day
week 2 (Jan 19, 21)	Introduction to evolution
week 3 (Jan 24, 26, 28)	Population genetics, Origin of species
week 4 (Jan 31, Feb 2, 4)	Taxonomy and systematics
Midterm I (Feb 7)	weeks 1 to 4 to be covered
week 5 (Feb, 9, 11)	Bacteria and Archaea
week 6 (Feb 14, 16, 18)	Protists, Plants and the conquest of Land
week 7 (Feb 21, 23, 25)	Plant diversity, Fungi
week 8 (Feb 28, Mar 2, 4)	Animal diversity, Invertebrates
week 9 (Mar 7, 9)	Invertebrates
Midterm II (March 11)	weeks 5 to 9 to be covered
March 14-19	No class, Spring break
week 10 (Mar 21, 23, 25) March 26 th	Vertebrates
week 11 (Mar 28, 30, Apr 1)	Last day to drop course with a 'W' and no academic penalty Vertebrates, Human evolution
week 12 (Apr 4, 6, 8)	Introduction to Ecology, Behavioral Ecology
week 13 (Apr 11, 13, 15)	Population Ecology, Disease Ecology
week 14 (Apr 18, 20, 22)	Community Ecology, species interactions
week 15 (Apr 25, 27, 29)	Biodiversity and Conservation, class-evaluations and review
Final exam (May TBA)	weeks 11 to 15, midterm I and II to be covered



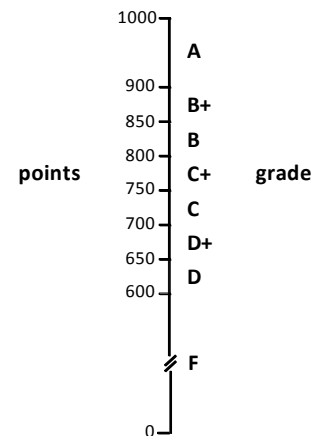
BSC 2011 | COURSE EVALUATIONS

GRADES. There will be a total of 1000 points available in this course in the form of exams, lecture participations (clickers), and weekly homework assignments through Blackboard. These are assigned as:

assignment	points
in class midterm I	225
in class midterm II	225
class participation with clickers	100
homework on Blackboard	125
cumulative final exam	325
total	1000

There is no curve for this course. However, if midterms, assignments and the final exam turn out more difficult than anticipated, the grades will be adjusted upwards. The absence of a curve guarantees that students scoring 900 or above will receive an A regardless of the grade adjustment.

GRADING SCALE



CLICKER PARTICIPATION AND ATTENDANCE. Attendance is mandatory. Participation and attendance will be assessed using electronic clickers. These are purchased from the bookstore and should be registered prior to the first class on Jan. 10th. Participation is assessed at the beginning of the class with a short quiz on material from the previous class, or as brief questions throughout the lecture. Answering is worth 1 to 2 points (this will also register your attendance), and a correct answer may be worth an additional point, for a total 100 points of your semester total. Use of someone else's clicker is academic dishonesty and everyone involved will have their final grade penalized by an entire course grade.

HOMEWORK. Homework will be assigned throughout the term through our **Connect website**: http://connect.mcgraw-hill.com/class/m_lajeunesse_bsc_2011_spring_2011. Homework must be completed by the posted deadlines; however, you will not have a time limit on the homework (e.g., 2 hours to complete the assignment). You can **access Connect** if you purchased the textbook with Connect or Connect Plus, this will also provide you with an access code needed to log into our course webpage. If you do not have a code, you can purchase one at the Connect website.

MIDTERMS AND EXAMS. There will be two midterms, each with 45 multiple choice questions, and a final exam with 65 questions. The final will have two sections with the first testing the last third of the course (45 questions), and the second testing the material covered in the two midterms (20 questions). Each multiple choice is worth 5 points in your semester total of 1000. Your exam and scantron must be returned at the end of the exam.

What you should have...

- 1) number 2 pencil with a good eraser
- 2) USF ID or Driver's License that will be checked at the start and end of the test

What you should put away and adjust...

- 1) any electronic device
- 2) notes, textbook, study cards
- 3) sunglasses or hats must be worn backwards or removed, and hoodies must not cover head

You must take every exam, and there will be no scheduled make-up exams. If you miss an exam, but have a documented excuse, you must take the exam within 48 hours of the scheduled exam time. If you miss two exams you should withdraw from the course. If you are late for the exam and any students have already completed and left the exam, you may not be allowed to take the exam. Students anticipating missing an exam due to a religious holiday, or have a scheduled conflict with documentation, must provide a written notice to me (lajeunesse@usf.edu) at least one week before the exam.

Midterm scantron sheets will be returned during the next class after the exam. If at any time you believe there is **an error with your recorded score**, email me and I will check it against the computer output from the grading center. Corrections can be made only if your exam was graded by the wrong answer key or if your score was incorrectly entered in the gradebook. Exam scores cannot be corrected due to your errors in marking the scantron—it is your responsibility to make clean and accurate responses.